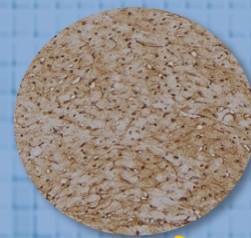
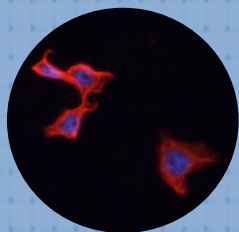


*A Phosphorylated antibodies specialized company*

The winner of  
**2019 CiteAb Award**  
Antibody supplier to watch in 2019



**New Launching in Malaysia**

Up to **25% off**

Promo code: AB092019  
T&C Apply

## Why Affinity Biosciences?

- ✓ **Broadest range** - 13,000 antibodies, 15,000 blocking peptides, 2000 Phosphor antibodies in stock for instant shipping. (800 unique Phosphor antibodies worldwide)
- ✓ **Unique Phosphor antibodies** - produced based on latest phosphorylation sites information from all magazines over the past 5 years.
- ✓ **High specificity** - i) the specificity of antibodies are validated using independent antibody validation procedure recommended by IWGAV, ii) both phosphor-peptide and non-phosphor peptide were used for blocking to ensure specificity.
- ✓ **Quality control** - All antibodies are validated by western blotting, IHC and IF, covering >30 species for species reactivity testing and with a superior validation strategy by adopting a blocking peptide-MS combination technology.

Distributed by:



**Nanogene Solutions Sdn Bhd** (1039484-A)

[www.nanogenesolutions.com](http://www.nanogenesolutions.com)  
Email: [ngs@nanogenesolutions.com](mailto:ngs@nanogenesolutions.com)  
Tel: 03-6136 6063

## The combination of blocking peptide and Mass spectrometry (MS)

The International  
Antibody Validation  
Working Group  
(IWGAV)

Genetic strategies

Orthogonal strategies

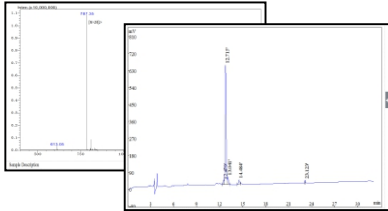
Independent antibody

Expression of tagged proteins

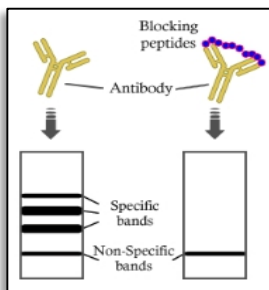
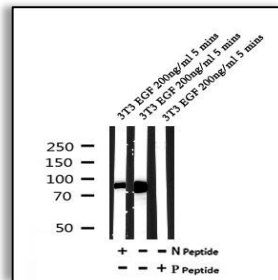
Immune-capture & MS

By incorporating years of experience in antibody development and production, Affinity Biosciences adopts a more appropriate strategy for antibody verification: the combination of blocking peptide and Mass spectrometry (MS)

Here at Affinity Biosciences, the specificity of antibodies are validated using Independent antibody validation procedure recommended by IWGAV, in which utilizing two or more independent antibodies to identify the non-overlapping epitopes of an antigen or a protein target. By comparing the results of the antibodies which recognize the independent regions of the same target protein, the specificity of these antibodies are ensured.



For starters, we perform a MS analysis of the blocking peptide to ensure that the peptide sequence is accurate.



In WB assay, the peptide blocks the signal of the target antibody. The blocking peptide will compete against the target protein for antibody binding site, leaving no specific bands in the blocking group.

The blocking peptide (antigen) and the antibody are of one-to-one correspondence. This is most primitive material that only original manufacturers can provide.

For example, WB validation for **Phospho-MSK1 (Ser211) Antibody** (Cat#. AF7155) in which non-phosphorylated blocking peptide and phosphorylated blocking peptide were added in Lanes 1 and Lane 3, respectively. Lane 2 was left without blocking is used as control (picture above).

Distributed by:



**Nanogene Solutions Sdn Bhd** (1039484-A)

www.nanogenesolutions.com  
Email: ngs@nanogenesolutions.com  
Tel: 03-6136 6063